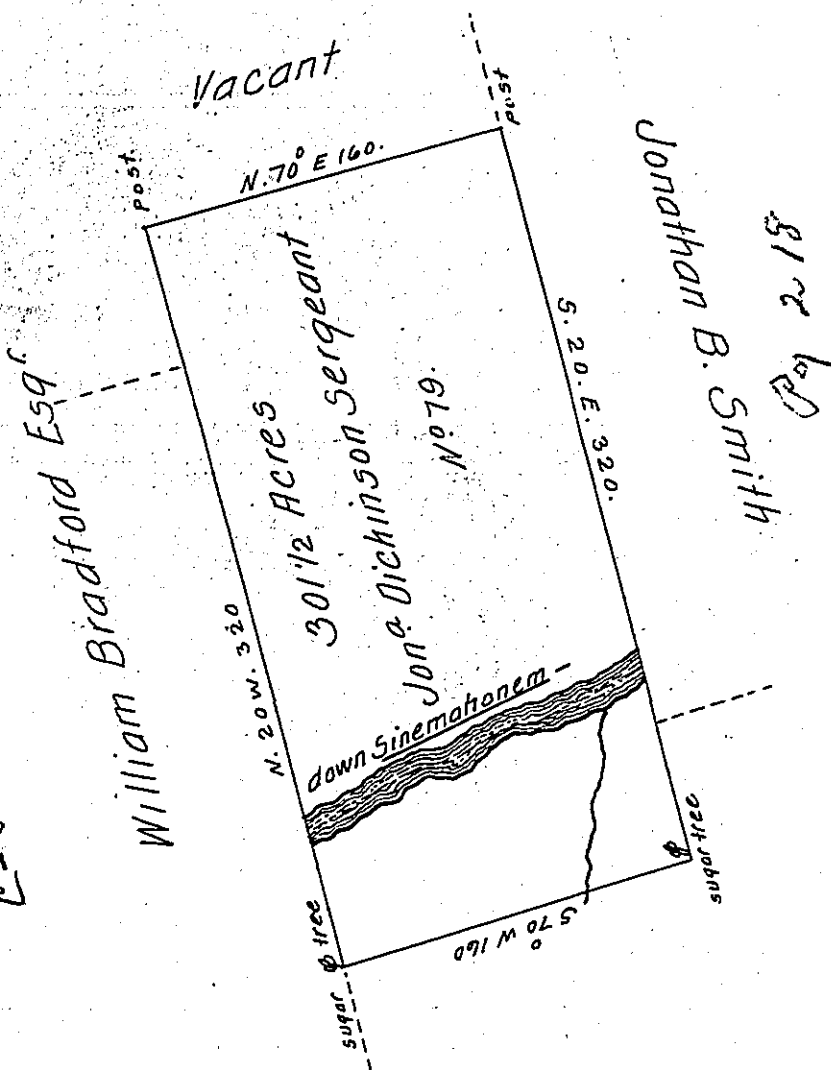


C-5-237



A Draught of a tract of Land situate on Sinemahonem— in District  
 N<sup>o</sup> 8 the County of Northumberland containing three hundred and  
 one Acres and an half and Allowance. Surveyed October the 13<sup>th</sup>  
 1785 for Jonathan Dickinson Sergeant Esquire in pursuance of a  
 Warrant N<sup>o</sup> 79 bearing date the 17<sup>th</sup> day of May 1785.

To John Lukens Esq<sup>r</sup> } Jas<sup>s</sup> Boyd D. S.  
 Surveyor General }

IN TESTIMONY that the above is a copy of the original remaining on file in  
 the Department of Internal Affairs of Pennsylvania, made  
 conformably to an Act of Assembly approved the 16th day of  
 February, 1833, I have hereunto set my Hand and caused  
 the Seal of said Department to be affixed at Harrisburg,  
 this twentieth day of November 1906.

*Isaac P. Brown*  
 Secretary of Internal Affairs